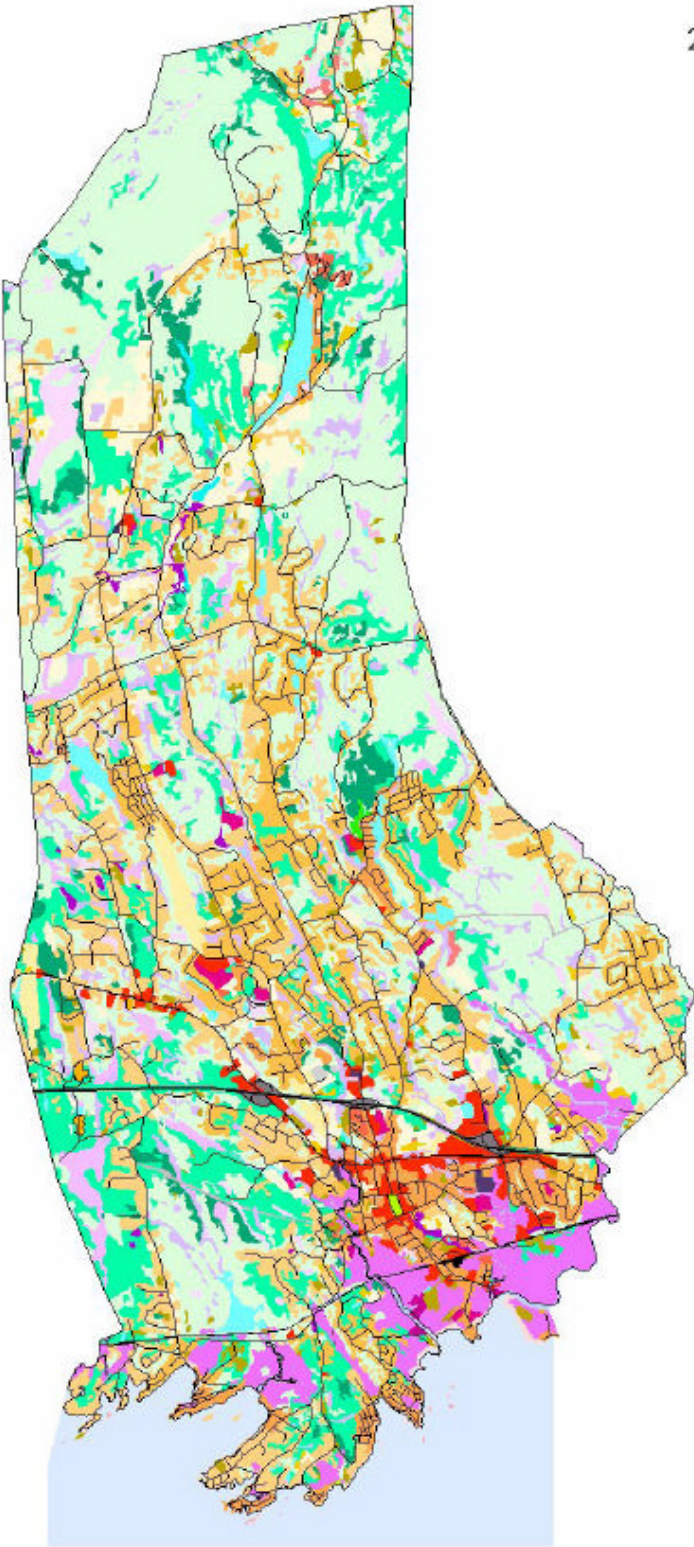


2. Land Use /Land Cover

Town of Guilford, Connecticut



Legend
 Land Use/Land Cover Designations
 Prepared for Guilford by Natural
 Resource Conservation Service - 2004

- Multi-family - medium to high rise apartment/condos (3 or more stories)
- Single Family/Duplex - 4 or more units/dwrs
- Single Family/Duplex - 2 to 3 units/dwrs
- Single Family/Duplex - less than 2 units/dwrs
- Mobile home parks
- Other residential
- Commercial/Service/recreational
- Industrial
- Rail transportation
- Road transportation
- Electric/gas/other utilities
- Water/wastewater Utilities
- Playgrounds/Play fields/Ski fields
- Sports areas/Tennis courts/Basketball courts
- Golf courses
- Parks/Recreation
- Marinas/Launches
- Cemeteries
- Hay/Forage/Permanent pasture
- Orchards/Bush fruits/Ineysards/Ornamental horticulture
- Other agricultural land/Associated agricultural structures
- Mixed herbaceous and/or shrub/brush
- Recently logged/Partial canopy up to 25%
- Broadleaf forest
- Coniferous forest
- Mixed coniferous-broadleaf forest
- River/canal/other waterway - Non-tidal
- River/canal/other waterway - Tidal
- Lakes/Ponds
- Reservoirs
- Bay/estuarine
- Forested wetland
- Emergent wetland (Freshwater) Shallow marsh
- Emergent wetland (Freshwater) Deep marsh
- Emergent wetland (Saltwater marshes)
- Scrub/shrub wetland
- Bog/shrub wetland
- Barren/Exposed rock
- Gravel pit/Strip mine/Quarry
- Multi-family - low rise apartment/condo town houses (1 or 2 stories)

Source: Town of Guilford GIS, 2004.
 Prepared by Leslie Kane

Scale: 1"=5,000'

