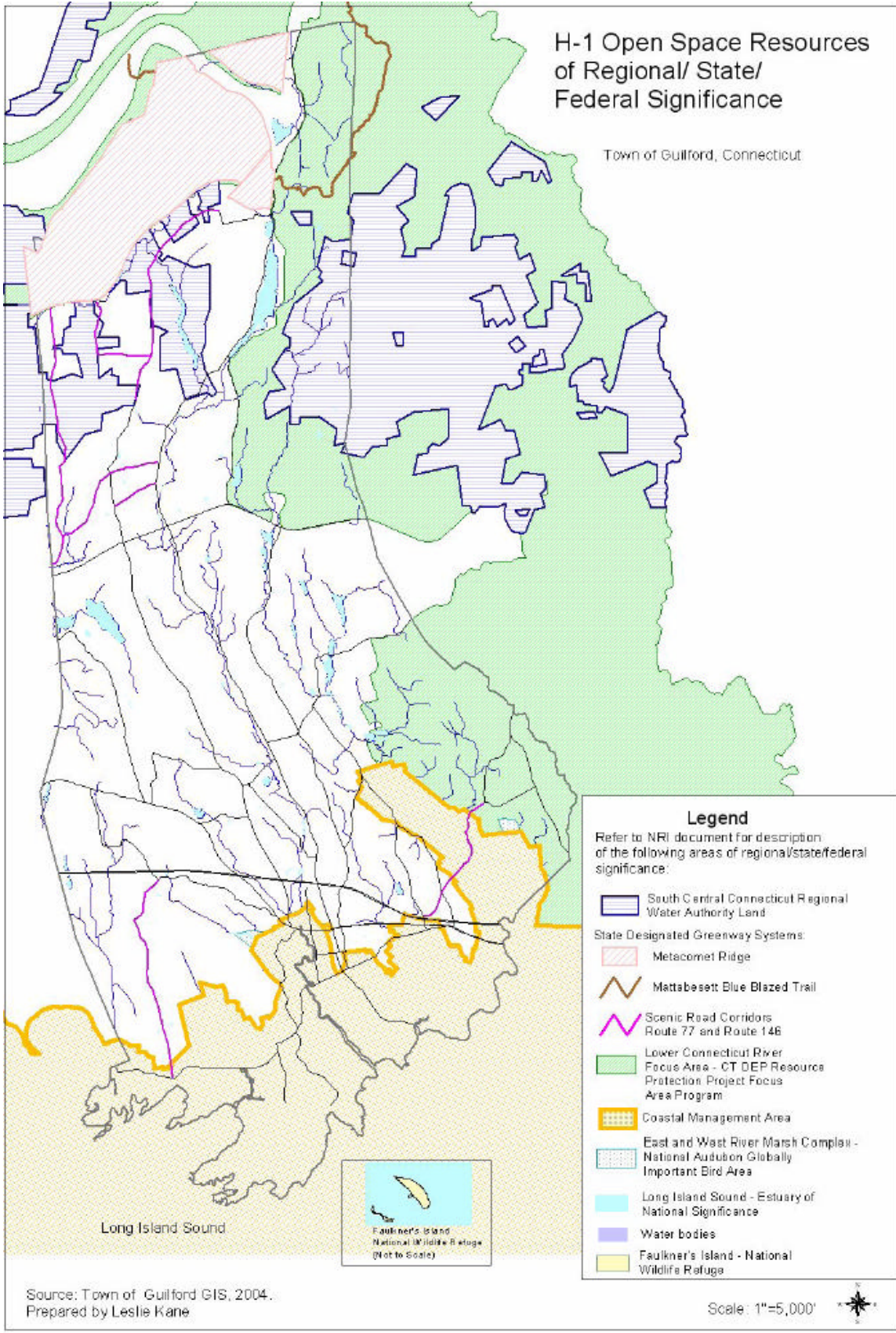


H-1 Open Space Resources of Regional/ State/ Federal Significance

Town of Guilford, Connecticut



Legend

Refer to NRI document for description of the following areas of regional/state/federal significance:

-  South Central Connecticut Regional Water Authority Land
- State Designated Greenway Systems:
 -  Metacombet Ridge
 -  Mattabesett Blue Blazed Trail
 -  Scenic Road Corridors
Route 77 and Route 146
-  Lower Connecticut River Focus Area - CT DEP Resource Protection Project Focus Area Program
-  Coastal Management Area
-  East and West River Marsh Complex - National Audubon Globally Important Bird Area
-  Long Island Sound - Estuary of National Significance
-  Water bodies
-  Faulkner's Island - National Wildlife Refuge

Long Island Sound



Source: Town of Guilford GIS, 2004.
Prepared by Leslie Kane

Scale: 1"=5,000'

